

WAINWRIGHT HIGH SCHOOL NEWSLETTER



Semester: One | Issue 5 | Date: January 7, 2022

We hope that everyone was able to enjoy the time away from school, possibly with family, or friends or maybe just with the ones closest to you. December came and went in a blur of activity and excitement and we expect that January might move along quickly as well.

As we move closer to course completions for the semesterized classes, there can often be a sense of excitement accompanied by anxiety.

Although there will be some differences to our semester one end this year, no Diploma exams for grade 12s for example, there still is the need to prepare for completing courses.

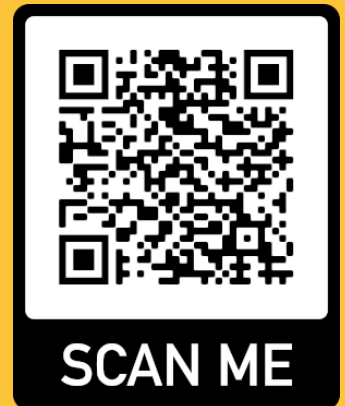
Here are a few tips to help students stay on track for

the end of semester one:

- Start preparing for completing the course requirements sooner than later.
- Use R2 sessions to sharpen the skills that have been practiced and review the knowledge that has been gained.
- Make a list of assignments that need to be completed and organize time around those tasks.

Overall, we are excited to start off a new year, and we are looking forward to when students return.

**Happy New Year
everyone!**



KEY DATES

January 10th- Classes resume

Jan 31st - Feb 1st - No classes

January 25th - 27th - Semestered class assessments -

February 2nd - First day of Semester 2 and Quarter 3 options

Leadership Activities!

Spirit Days
For each student that dresses up, 25 additional points will be awarded for your team.

CHRISTMAS HAT DAY
Monday
December 6th

CHRISTMAS SOCKS DAY
Tuesday
December 14th

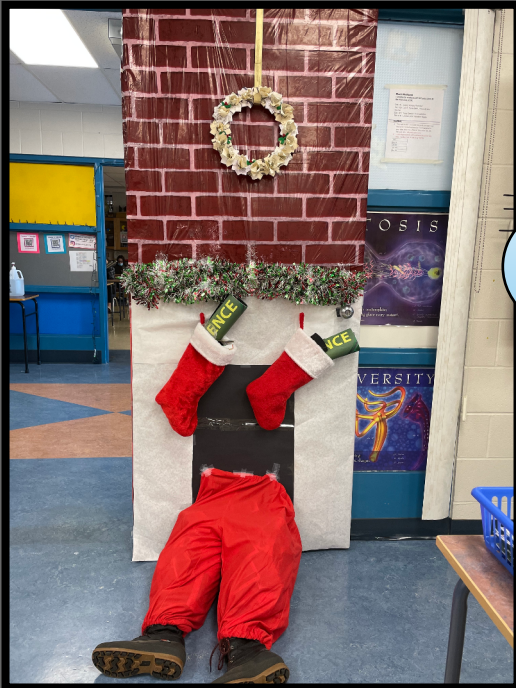
PAJAMA DAY
Thursday
December 9th

UGLY SWEATER DAY
Friday
December 10th

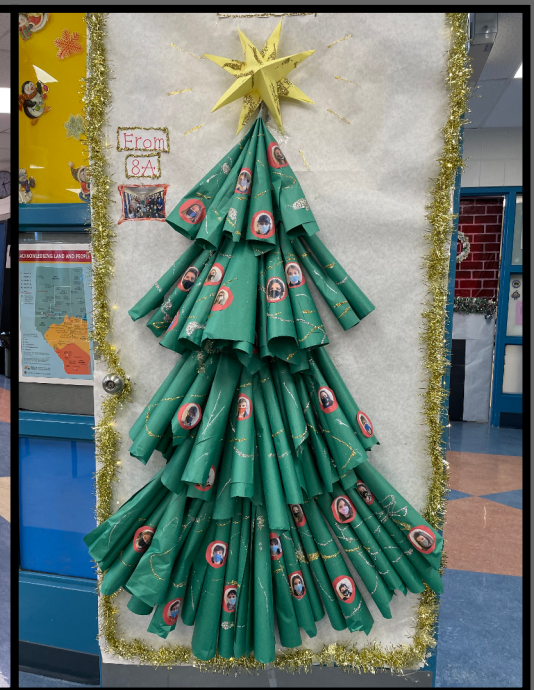
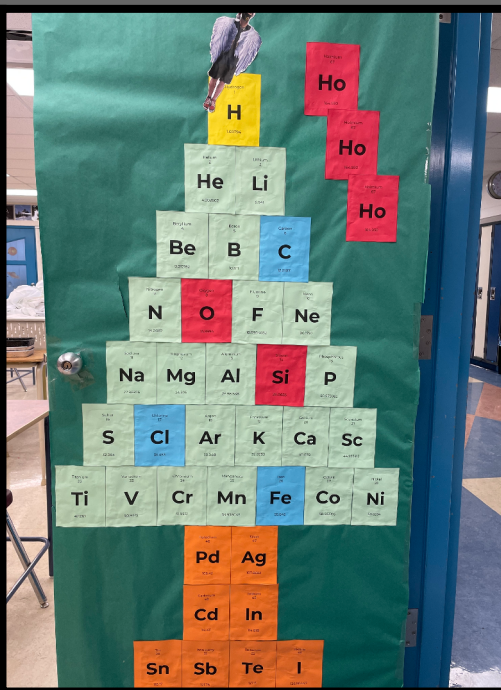
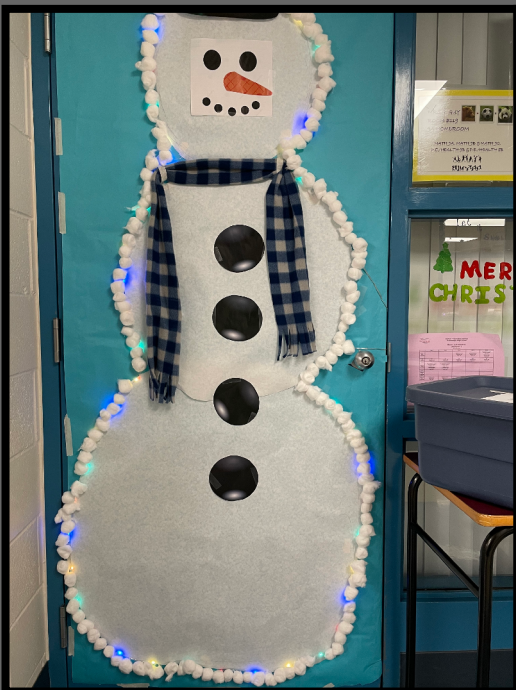
RED AND GREEN DAY
Thursday
December 16th

2





Door Decorating



Mental Health

- If a child needs someone to talk to, they can text **CONNECT** to the Kids' Help Phone at 686868 or call 1-800-668-6868. This 24/7, free service offers professional counselling, information and referrals. The Jack.org [Alberta COVID-19 Youth Mental Health Resource Hub](#) also has great information for teens on mental health, self-care and supporting others.
- If an adult needs someone to talk to, they are encouraged to call the confidential, toll-free, 24/7 mental health helpline at 1-877-303-2642. This helpline is attended by a team that includes nurses, psychologists and social workers.
- The Alberta Health Services website [Help in Tough Times](#) also has helpful information, including the [Text4Hope resource](#), which you can subscribe to for free by texting COVID19HOPE to 393939. It offers 3 months of supportive text messages written by mental health therapists.

With the low temperatures , we would like to remind everyone that the main entrance doors and south entrance doors will not open until 8:30.



Please continue to complete the daily screening and refrain from coming to school if you have developed symptoms.



A reminder to wear your masks while inside. Check the 2021-22 Parent Guide for updates.



FREE VIRTUAL PARENT PRESENTATION

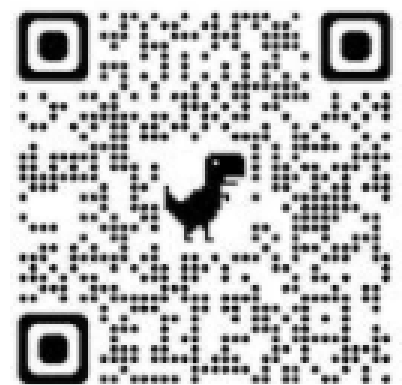
SELF-HARM: QUESTIONS & ANSWERS FROM A LOCAL PSYCHOLOGIST/PROFESSOR

**MONDAY
JAN 17**

With Professor Dawn McBride, Ph.D. (Counselling Psychology, University of Lethbridge Canada) is also a registered psychologist. Her main areas of research and clinical practice center around promoting value-based ethics and educating people about emotional regulation to reduce suffering and promote healthy functioning. She has clinical expertise in many areas including group therapies, Transactional Analysis, EMDR, Somatic Experiencing, CBT, play/creative therapies and ego-state interventions.

7-8pm

What are examples of self-harm, other than cutting? What is the cycle of self-harm? What are the 3Rs to responding to someone who self-harms? Regulate, Relate, Reason. What are some ways I can help someone regulate?



Use this QR Code to access a Zoom link
to the presentation.



VIRTUAL SHOWCASE



CAREERS is exploring skilled trades, ICT and agriculture around the province.

Students are encouraged to come learn about job opportunities available in a variety of industries and what it takes to succeed in a workplace.

AGRICULTURE - PLANT SYSTEMS
JANUARY 18 • 6PM

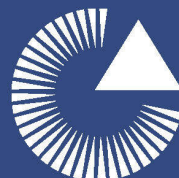
FORESTRY
FEBRUARY 16 • 6PM

REGISTER HERE



careersnextgen.ca

for information email or call
events@nextgen.org
1.888.757.7172



CAREERS
take on the future

Provost Music Festival

March 27 - April 1, 2022

Speech . Strings . Instrumental . Piano . Vocal

Dear Parents, Teachers and Students-

The Provost Music Festival is proud to announce the upcoming dates of the 50th annual festival. This exciting week long event showcases an impressive array of local talent. All participants are professionally adjudicated in non-competitive classes and considered for awards or competition advancement. Audience support is always welcomed and encouraged. Please join us and celebrate the arts!

Entry Forms Now Available

Registration deadline late January 28 2022

Find us on-line! for contact information, involvement opportunities, registration packages, class selections or syllabus links.

www.provostmusicfestival.com

50
Years of
Excellence

VIRTUAL SESSIONS

TAKE ON THE FUTURE AND LEARN FROM ALBERTA INDUSTRY EXPERTS

November 30 • Industrial Trades
(YOUNG WOMEN IN TRADES AND TECHNOLOGIES)

January 12 • Agriculture/Cooking
(YOUNG WOMEN IN TRADES AND TECHNOLOGIES)

January 18 • Agriculture - Plant Systems

February 16 • Forestry

February 24 • ICT/Forestry
(YOUNG WOMEN IN TRADES AND TECHNOLOGIES)

March 8 • Scaffolding

March 17 • Automotive/Mechanical
(YOUNG WOMEN IN TRADES AND TECHNOLOGIES)

March 23 • Mechanical Trades

April 5 • Service Trades

April 20 • Pipe Trades

May 10 • Information and Communications Technology

May 17 • All Opportunities/Summer Internships

CALENDAR



careersnextgen.ca/events

for information email or call
events@nextgen.org
1.888.757.7172



CAREERS
take on the future



wainwrightonwellness



[Wainwright on Wellness](#)



[Wainwright on Wellness Facebook - Home](#)



[Wainwright on Wellness Instagram - Home](#)

Wainwright on Wellness (WOW) is a program funded by Alberta Services as part of the *Mental Health Capacity Building Initiative (MHCB)* to provide programming and support to students, schools, families and communities in building their mental health and wellness capacity.

Please click on above links for additional online prevention and promotion support

School Council Dates

Please join us **VIRTUALLY** on the **3rd Wednesday** of each month!

For more information, please contact Jason Dahlgren, School Council President at councilwhs@gmail.com



Habitat for Humanity Edmonton

Habitat's affordable home ownership program

Would you like to become a homeowner in Wainwright?

Your family may qualify if...

- Your annual gross income is between \$35,000 and \$65,000
- You have children under the age of 18 living at home
- You are willing to volunteer 500 hours
- You are a Canadian Citizen or Permanent Resident.

For more information, please contact Carley at (780) 842-3381. HFH.org



Habitat for Humanity Edmonton

Habitat's affordable home ownership program

Would you like to become a homeowner in Wainwright?

Your family may qualify if...

- Your annual gross income is between \$35,000 and \$65,000
- You have children under the age of 18 living at home
- You are willing to volunteer 500 hours
- You are a Canadian Citizen or Permanent Resident.

For more information, please contact Carley at (780) 842-3381. HFH.org



2021-2022 BTPS SCHOOL YEAR CALENDAR

Buffalo Trail Public Schools is committed to maximizing student learning, in a safe and caring environment, supported by a highly effective team.

AUGUST	SEPTEMBER	OCTOBER	NOVEMBER
S M T W T F S 1 2 3 4 5 6 7 8 9 10 11 12 13 14 15 16 17 18 19 20 21 22 23 24 25 26 27 28 29 30 31	S M T W T F S 1 2 3 4 5 6 7 8 9 10 11 12 13 14 15 16 17 18 19 20 21 22 23 24 25 26 27 28 29 30	S M T W T F S 1 2 3 4 5 6 7 8 9 10 11 12 13 14 15 16 17 18 19 20 21 22 23 24 25 26 27 28 29 30 31	S M T W T F S 1 2 3 4 5 6 7 8 9 10 11 12 13 14 15 16 17 18 19 20 21 22 23 24 25 26 27 28 29 30
DECEMBER	JANUARY	FEBRUARY	MARCH
S M T W T F S 1 2 3 4 5 6 7 8 9 10 11 12 13 14 15 16 17 18 19 20 21 22 23 24 25 26 27 28 29 30 31	S M T W T F S 1 2 3 4 5 6 7 8 9 10 11 12 13 14 15 16 17 18 19 20 21 22 23 24 25 26 27 28 29 30 31	S M T W T F S 1 2 3 4 5 6 7 8 9 10 11 12 13 14 15 16 17 18 19 20 21 22 23 24 25 26 27 28	S M T W T F S 1 2 3 4 5 6 7 8 9 10 11 12 13 14 15 16 17 18 19 20 21 22 23 24 25 26 27 28 29 30 31
APRIL	MAY	JUNE	JULY
S M T W T F S 1 2 3 4 5 6 7 8 9 10 11 12 13 14 15 16 17 18 19 20 21 22 23 24 25 26 27 28 29 30	S M T W T F S 1 2 3 4 5 6 7 8 9 10 11 12 13 14 15 16 17 18 19 20 21 22 23 24 25 26 27 28 29 30 31	S M T W T F S 1 2 3 4 5 6 7 8 9 10 11 12 13 14 15 16 17 18 19 20 21 22 23 24 25 26 27 28 29 30	S M T W T F S 1 2 3 4 5 6 7 8 9 10 11 12 13 14 15 16 17 18 19 20 21 22 23 24 25 26 27 28 29 30 31

LEGEND	
 Holiday	 Day-in-Lieu
 Self Directed Teacher Day	 Celebration Day
 School Based PL	 Convention / ATA PL Day
 BTPS Learning Day	 First Student Day of Semester
 Central Office Closed	

The first day for students is **September 1, 2021**. **February 2, 2022** is the first day of Term 2. **June 29, 2022** is the last day of school for students.

Please be reminded that when inclement weather does not allow us to operate our buses, schools will be open, classes are occurring and student learning continues. As with any absence, students who miss material will be provided with an opportunity to receive instructional material through an alternate means or catch up on missed school work upon return to school

Students are required to be in attendance until the last day of school as identified by the BTPS Board Approved Calendar. Final exams at the Grade 7 to 9 level will occur during the last five student days each semester. During non-examination times, tutorials, course review and alternate activities will occur. Final exams in diploma courses will occur as described in the Alberta Education Diploma exam schedule (www.education.alberta.ca) and submission of marks will occur the day the diploma marks are due to Alberta Ed. During non-examination times, tutorials, course review and alternate activities will occur.

The 2021-2022 school calendar provides for instructional time for students that exceeds the requirements set by Alberta Education for instructional hours at the Grade 1-9 levels of 950 hours and at the Grade 10-12 levels for 1000 hours. The total student days in this year's calendar equals 181 days.

STUDENT NON-ATTENDANCE DATES

August 2	Heritage Day
August 26	Self Directed Teacher Day
August 27	BTPS Learning Day
August 30	Self Directed Teacher Day
August 31	School Based PL
September 6	Labour Day
October 8	Celebration Day
October 11	Thanksgiving Day
October 22	School Based PL & Support Staff PL
November 8	School Based PL
November 9	ATA Professional
November 10	Designated Day-in-Lieu (Staff Meeting)
November 11	Remembrance Day
November 12	Designated Day-in-Lieu (Parent Teacher Interviews)

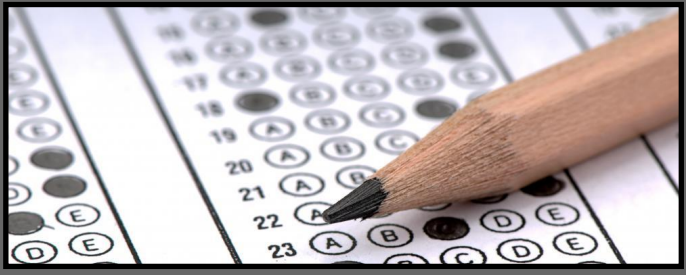
Dec 20 - 31	Christmas Break
January 31	Self Directed Teacher Day
February 1	School Based PL
February 17 & 18	ATA Teachers' Convention
February 21	Family Day
March 4	BTPS Learning Day
April 15	Good Friday
April 18 - 22	Easter Break
May 6	School Based PL
May 19	Designated Day-in-Lieu (Staff Meeting)
May 20	Designated Day-in-Lieu (Parent Teacher Interviews)
May 23	Victoria Day
June 30	Self Directed Teacher Day

** Central Office Closure will be July 18th - July 29th, 2022

Diploma Exams Paused

Educational minister LaGrange announced along with the extended winter break that diploma exams scheduled for January will be canceled, further stating that the choice to hold the later exams will be made at another date.

Historically, Diploma exams were worth 50% of student's final grade, making the provincially developed assessments rather high stakes



tests.

in the 2015 school year, this weighting was decreased to 30%, and more recently temporarily changed to 10% to compensate for the unfinished learning that occurred due to the COVID pandemic.

What are your thoughts about Diploma exam weights? We'd like to hear from you. Complete the form to share your ideas.



How valuable are Diploma Exams?

PERSEVERANCE

Perseverance is being steadfast and persistent. You commit to your goals and overcome obstacles, no matter how long it takes. When you persevere, you don't give up... you keep going. Like a strong ship in a storm, you don't become battered or blown off course. You just ride the waves.
~From the Virtues Project~

WHAT'S NEW AT WHS?

Mrs. Peggy Day is retiring after 25 years at WHS. Peggy will be missed by staff and students for her kind smile, infectious laugh and caring attitude to everyone in the building. She is well known for her attention to detail, expert care of our building and if you needed something you could always "ask Peggy". She took the time to get to know everyone and built long



lasting relationships with many during her time here at WHS. We hope you enjoy your retirement and stop in to visit! And feel free to bring cookies:)

WAINWRIGHT HIGH SCHOOL

800 6 Street
Wainwright, Alberta T9W 2R5
P: 780-842-4481
F: 780-842-3859
E: whs@btps.ca

